

BEST OF THE BEATLES

(A medley including: Ticket To Ride • Hey Jude • Get Back)

BAND INC

Date: 3/9/2

B \flat TRUMPET 1

No:

Words and Music by
JOHN LENNON and PAUL McCARTNEY
Arranged by JOHN MOSS

Chorale-like



Moderate Rock

11 "Ticket To Ride" 8



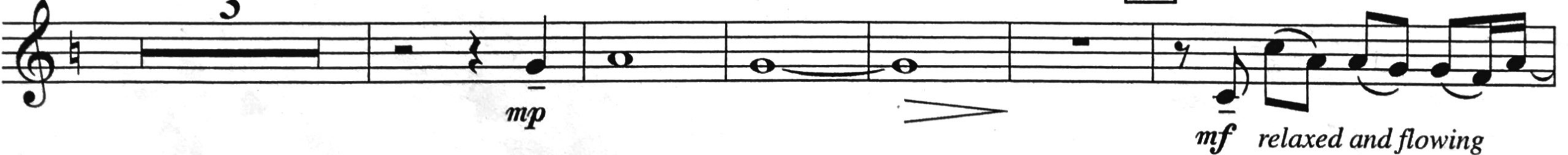
19



"Hey Jude"

32 Gently 3

40



TICKET TO RIDE

Words and Music by JOHN LENNON and PAUL McCARTNEY
Copyright © 1965 Sony/ATV Songs LLC

Copyright Renewed

This arrangement Copyright © 2003 Sony/ATV Songs LLC

All Rights Administered by Sony/ATV Music Publishing,
8 Music Square West, Nashville, TN 37203

International Copyright Secured All Rights Reserved

HEY JUDE

Words and Music by JOHN LENNON and PAUL McCARTNEY
Copyright © 1968 Sony/ATV Songs LLC

Copyright Renewed

This arrangement Copyright © 2003 Sony/ATV Songs LLC

All Rights Administered by Sony/ATV Music Publishing,
8 Music Square West, Nashville, TN 37203

International Copyright Secured All Rights Reserved

GET BACK

Words and Music by JOHN LENNON and PAUL McCARTNEY
Copyright © 1969 Sony/ATV Songs LLC

Copyright Renewed

This arrangement Copyright © 2003 Sony/ATV Songs LLC

All Rights Administered by Sony/ATV Music Publishing,
8 Music Square West, Nashville, TN 37203

International Copyright Secured All Rights Reserved

B \flat TRUMPET 1

53

Musical staff for measure 53, starting with a treble clef and a 2/4 time signature. The music begins with a rest, followed by a series of eighth notes and quarter notes. The dynamic marking *mf* is placed below the first note.

61 Driving Rock

Musical staff for measure 61, titled "Driving Rock". It features a treble clef and a 4/4 time signature. The music consists of eighth notes and quarter notes. Dynamic markings include *ff* (decrescendo), *poco*, *poco*, and *f* (with accents).

65 "Get Back"

Musical staff for measure 65, titled "Get Back". It features a treble clef and a 4/4 time signature. The music consists of eighth notes and quarter notes. The dynamic marking *mf* is placed below the first note.

73

Musical staff for measure 73, featuring a treble clef and a 4/4 time signature. The music consists of eighth notes and quarter notes. The dynamic marking *f* is placed below the first note.

1.

Musical staff for the first ending, featuring a treble clef and a 4/4 time signature. The music consists of eighth notes and quarter notes. The dynamic marking *ff* is placed below the first note.

2.

Musical staff for the second ending, featuring a treble clef and a 4/4 time signature. The music consists of eighth notes and quarter notes. Dynamic markings include *ff* (decrescendo) and *p < mf a tempo*.

87

Musical staff for measure 87, featuring a treble clef and a 4/4 time signature. The music consists of eighth notes and quarter notes. Dynamic markings include *f*, *sfz*, and *mf*.

poco

Musical staff for the continuation of measure 87, featuring a treble clef and a 4/4 time signature. The music consists of eighth notes and quarter notes. Dynamic markings include *fp*, *ff*, *mp*, *ff*, and *sffz*.