

DISNEY'S MAGICAL MARCHES

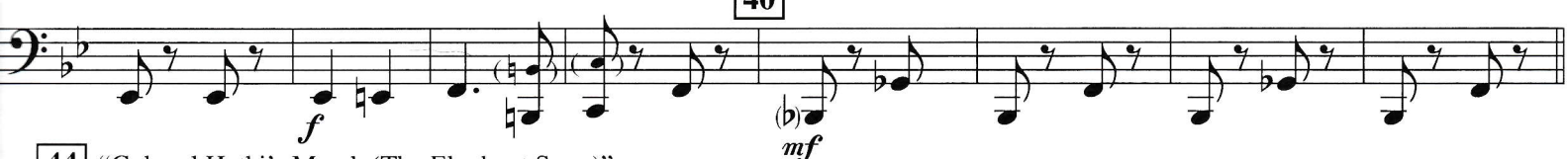
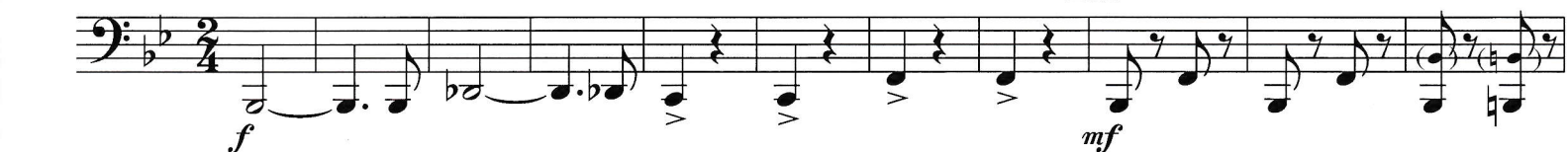
(A medley including: Supercalifragilisticexpialidocious • Colonel Hathi's March • Mickey Mouse March)

TUBA

Arranged by ERIC OSTERLING

Moderate March tempo

9 "Supercalifragilisticexpialidocious"



44 "Colonel Hathi's March (The Elephant Song)"



(♩ = ♩.)

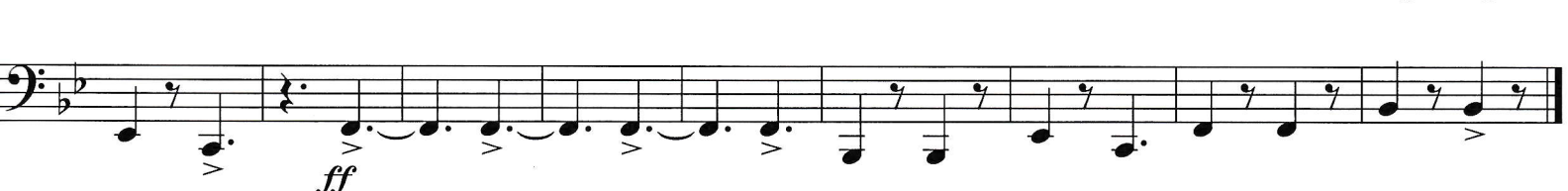
69 "Mickey Mouse March"



1. 2. 78



86



SUPERCALIFRAGILISTICEXPIALIDOCIOUS

From Walt Disney's MARY POPPINS

Words and Music by RICHARD M. SHERMAN and ROBERT B. SHERMAN

© 1963 Wonderland Music Company, Inc.

Copyright Renewed

This arrangement © 2003 Wonderland Music Company, Inc.

All Rights Reserved Used by Permission

08724916

Disney's Magical Marches - 1

MICKEY MOUSE MARCH

From Walt Disney's THE MICKEY MOUSE CLUB

Words and Music by JIMMIE DODD

© 1955 Walt Disney Music Company

Copyright Renewed

This arrangement © 2003 Walt Disney Music Company

All Rights Reserved Used by Permission

COLONEL HATHI'S MARCH (THE ELEPHANT SONG)

From Walt Disney's THE JUNGLE BOOK

Words and Music by RICHARD M. SHERMAN and ROBERT B. SHERMAN

© 1966 Wonderland Music Company, Inc.

Copyright Renewed

This arrangement © 2003 Wonderland Music Company, Inc.

All Rights Reserved Used by Permission