

Featured in the Twentieth Century Fox Television Series GLEE

Music from GLEE

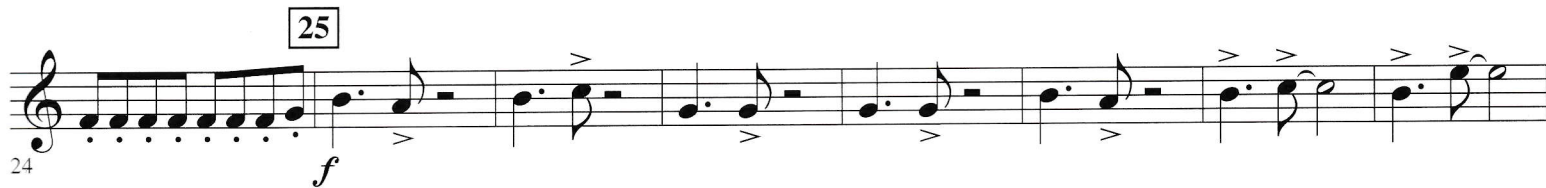
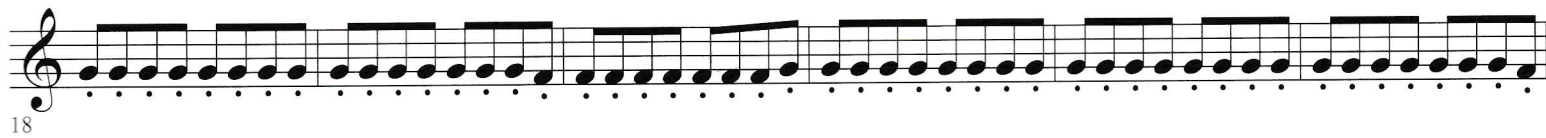
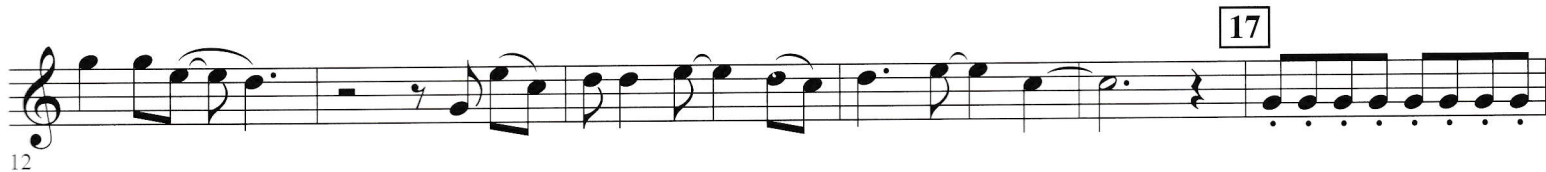
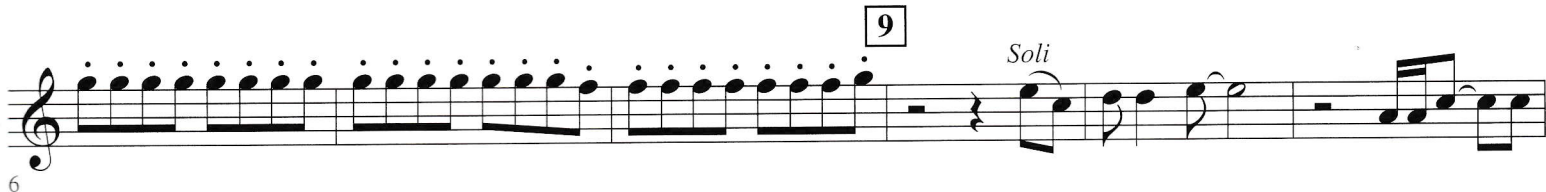
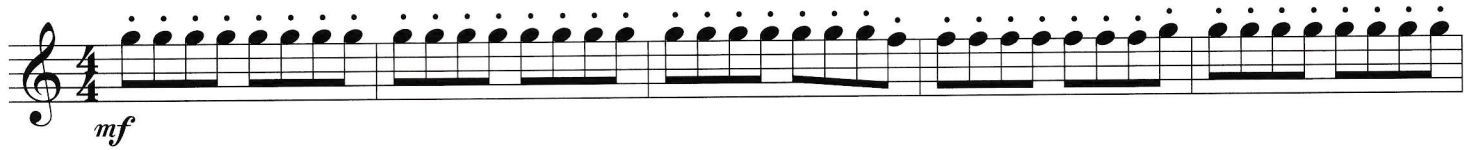
(Don't Stop Believin' • Alone • Sweet Caroline • You Keep Me Hangin' On)

B \flat TENOR SAXOPHONE

Original GLEE Arrangement by ADAM ANDERS and TIM DAVIS

Arranged by TED RICKETTS

"Don't Stop Believin'"
Moderate Rock



DON'T STOP BELIEVIN'

Words and Music by STEVE PERRY, NEAL SCHON and JONATHAN CAIN

Copyright © 1981 Lacey Boulevard Music (BMI) and Weed-High Nightmare Music (BMI)

This arrangement Copyright © 2010 Lacey Boulevard Music (BMI) and Weed-High Nightmare Music (BMI)

All Rights for Weed-High Nightmare Music Administered by Wixen Music Publishing Inc.

International Copyright Secured All Rights Reserved

ALONE

Words and Music by BILLY STEINBERG and TOM KELLY

Copyright © 1983 Sony/ATV Music Publishing LLC

This arrangement Copyright © 2010 Sony/ATV Music Publishing LLC

All Rights Administered by Sony/ATV Music Publishing LLC, 8 Music Square West, Nashville, TN 37203

International Copyright Secured All Rights Reserved

SWEET CAROLINE

Words and Music by NEIL DIAMOND

© 1969 (Renewed) STONEBRIDGE MUSIC

This arrangement © 2010 STONEBRIDGE MUSIC

All Rights Reserved

YOU KEEP ME HANGIN' ON

Words and Music by EDWARD HOLLAND, LAMONT DOZIER and BRIAN HOLLAND

© 1966 (Renewed 1994) JOBETE MUSIC CO., INC.

This arrangement © 2010 JOBETE MUSIC CO., INC.

All Rights Controlled and Administered by EMI BLACKWOOD MUSIC INC. on behalf of STONE AGATE MUSIC (A Division of JOBETE MUSIC CO., INC.)

All Rights Reserved International Copyright Secured Used by Permission

B \flat TENOR SAXOPHONE

71



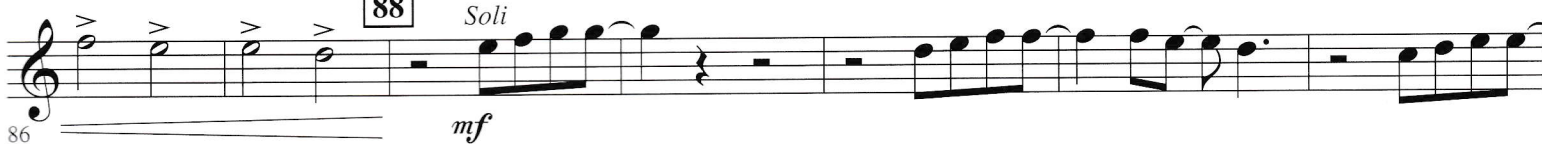
"Sweet Caroline"

79 Moderate Rock (♩ = ♩^3)



88

Soli



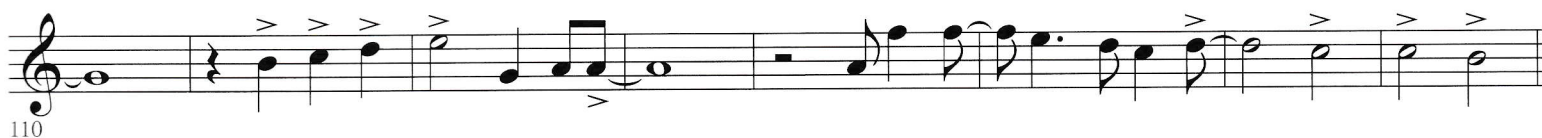
96

mp cresc.



106

f

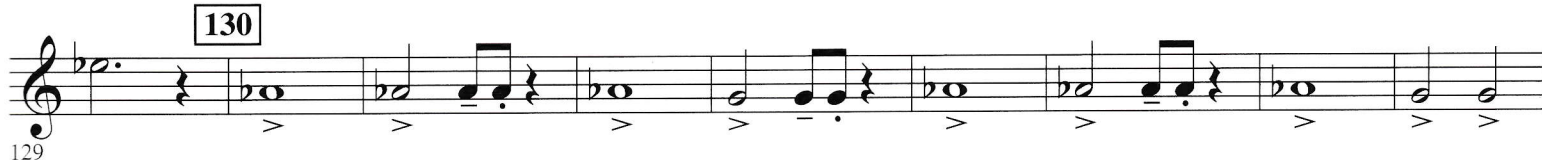


"You Keep Me Hangin' On"

118 Rock (straight 8ths)



130



138

142

