

ADELE IN CONCERT

CAMDEN COMMUNITY
BAND INC

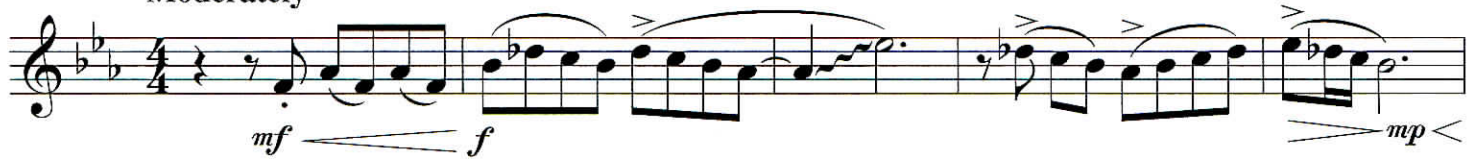
(Rolling in the Deep • Set Fire to the Rain • Someone Like You)

Date: 3/8/13
No: 3/13

Arranged by MICHAEL BROWN

F HORN 2

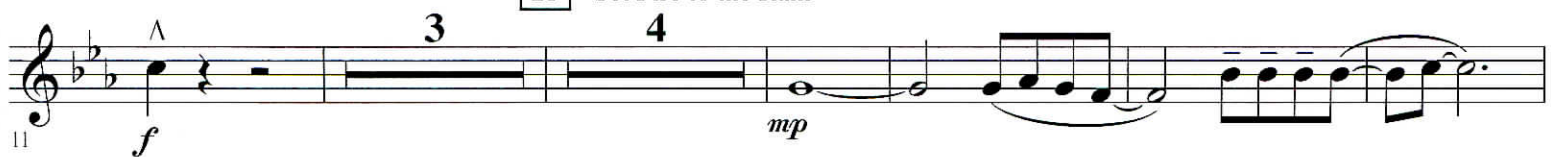
"Rolling in the Deep"
Moderately



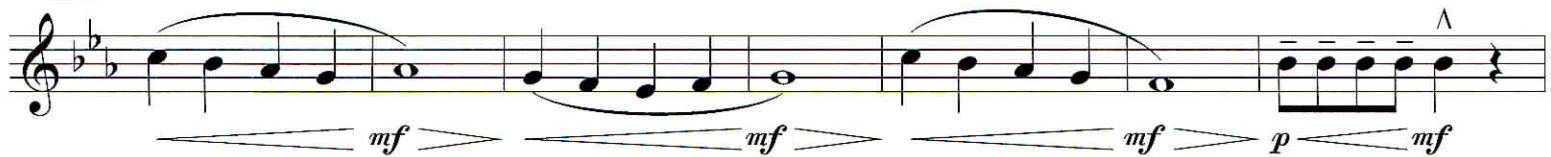
9 Faster



15 "Set Fire to the Rain"



23



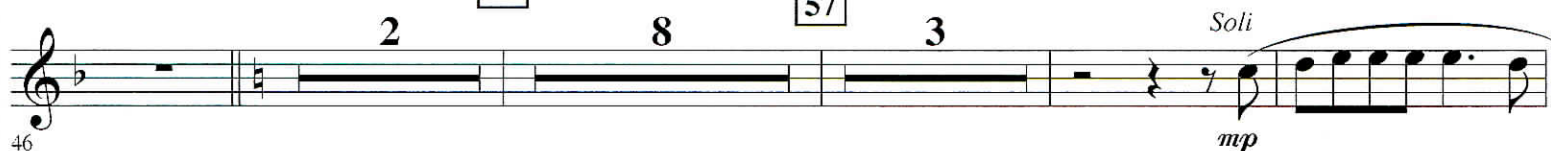
30



38



49 "Someone Like You"



46

ROLLING IN THE DEEP

Words and Music by ADELE ADKINS and PAUL EPWORTH

Copyright © 2010, 2011 UNIVERSAL MUSIC PUBLISHING LTD. and EMI MUSIC PUBLISHING LTD.

This arrangement Copyright © 2012 UNIVERSAL MUSIC PUBLISHING LTD. and EMI MUSIC PUBLISHING LTD.

All Rights for UNIVERSAL MUSIC PUBLISHING LTD. in the U.S. and Canada Controlled and Administered by UNIVERSAL - SONGS OF POLYGRAM INTERNATIONAL, INC.

All Rights for EMI MUSIC PUBLISHING LTD. in the U.S. and Canada Controlled and Administered by EMI BLACKWOOD MUSIC INC.

All Rights Reserved Used by Permission

SET FIRE TO THE RAIN

Words and Music by ADELE ADKINS and FRASER SMITH

Copyright © 2011 UNIVERSAL MUSIC PUBLISHING LTD. and CHRYSALIS MUSIC LTD.

This arrangement Copyright © 2012 UNIVERSAL MUSIC PUBLISHING LTD. and CHRYSALIS MUSIC LTD.

All Rights for UNIVERSAL MUSIC PUBLISHING LTD. in the U.S. and Canada Controlled and Administered by UNIVERSAL - SONGS OF POLYGRAM INTERNATIONAL, INC.

All Rights for CHRYSALIS MUSIC LTD. in the U.S. and Canada Administered by BMG RIGHTS MANAGEMENT (US) LLC

All Rights Reserved Used by Permission

SOMEONE LIKE YOU

Words and Music by ADELE ADKINS and DAN WILSON

Copyright © 2011 UNIVERSAL MUSIC PUBLISHING LTD., CHRYSALIS MUSIC and SUGAR LAKE MUSIC

This arrangement Copyright © 2012 UNIVERSAL MUSIC PUBLISHING LTD., CHRYSALIS MUSIC and SUGAR LAKE MUSIC

All Rights for UNIVERSAL MUSIC PUBLISHING LTD. in the U.S. and Canada Controlled and Administered by UNIVERSAL - SONGS OF POLYGRAM INTERNATIONAL, INC.

All Rights for CHRYSALIS MUSIC and SUGAR LAKE MUSIC Administered by BMG RIGHTS MANAGEMENT (US) LLC

All Rights Reserved Used by Permission

04001333

Adele In Concert - 1

F HORN 2

62 66

p *f* *mf*

68 74

mf *mp*

76 82 "Rolling in the Deep" Moderate Rock

mf *f*

86

91 94 102

p

103

108 110

f

113

rall. *sfz*

119 Broadly

ff *rit.*