

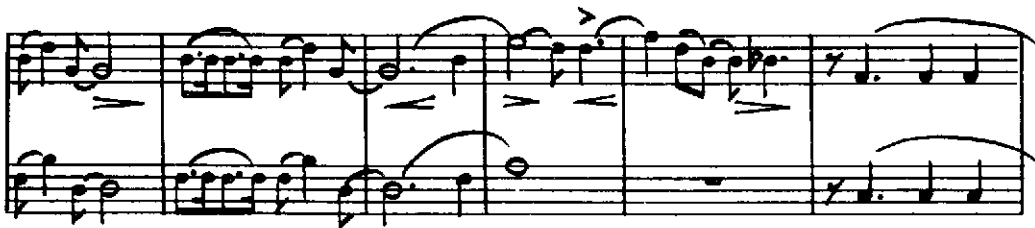
WHERE OR WHEN

Arranged for Orchestra by
JIMMY LALLY

1st E♭ Alto Saxophone

Words by
LORENZ HART
Music by
RICHARD RODGERS

Medium Quick-step tempo



Copyright 1937 by Chappell & Co., Inc., New York, N.Y.
This Arrangement Copyright MCMXLIII by Chappell & Co., Inc., New York
CHAPPELL & CO., LTD., 50, New Bond Street, London, W.1 Sydney & Paris
42009

International Copyright Secured
All rights reserved
Made in England

1st E \flat Alto Saxophone

The first system consists of two staves. The upper staff contains a melodic line with eighth and sixteenth notes, some beamed together, and slurs. The lower staff provides a harmonic accompaniment with quarter and eighth notes. A dynamic marking of *mf* is present in the middle of the system.

The second system continues the melodic and harmonic lines. It features a double bar line in the middle, indicating a measure rest for the saxophone. The system concludes with a double bar line and repeat dots.

The third system begins with a *No Soli* instruction. The upper staff has a *2^o* marking above the first measure. The melodic line is more active with sixteenth notes. A dynamic marking of *f* is at the start, and *p* appears later in the system.

The fourth system features a *Soli* instruction. The melodic line is characterized by slurs and accents. A dynamic marking of *mf* is present.

The fifth system includes a *No Soli* instruction. The melodic line has slurs and accents. A dynamic marking of *mf* is present.

The sixth system features a *Soli* instruction. The melodic line has slurs and accents. A dynamic marking of *mf* is present.

The seventh system includes a *No Soli* instruction. The melodic line has slurs and accents. A dynamic marking of *f* is present.

The eighth system features a *No Soli* instruction. The melodic line has slurs and accents. A dynamic marking of *mp* is present.