

60

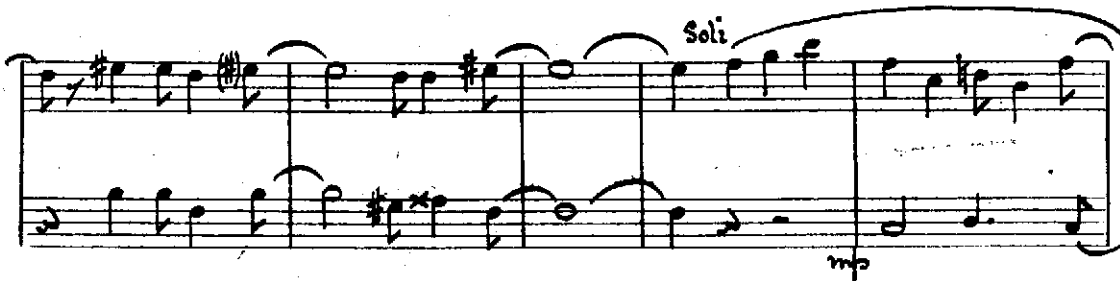
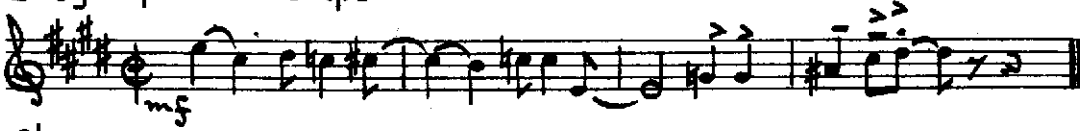
SOMEBODY LOVES ME

Arranged by
JIMMY LALLY

2nd E_b Alto Saxophone

Words by B. G. DE SYLVA
Music by GEORGE GERSHWIN

Easy Medium Tempo



Copyright MCMXXIV & MCML by Harms Inc., New York
CHAPPELL & CO., LTD., 50, New Bond Street, London, W.1. & Sydney
40576

9290

All rights reserved
Made in England
International Copyright Secured

2nd E_b Alto Saxophone

Musical staff with notes and a 'Soli' marking. The staff contains a melodic line with various note values and rests, including a half note with a fermata. The 'Soli' marking is placed above the staff.

Musical staff with notes and rests. The staff contains a melodic line with various note values and rests, including a half note with a fermata.

Musical staff with first and second endings. The first ending is marked '1°' and the second ending is marked '2°'. The staff contains a melodic line with various note values and rests, including a half note with a fermata.

Musical staff with 'Attack' marking and dynamics. The staff contains a melodic line with various note values and rests, including a half note with a fermata. The 'Attack' marking is placed above the staff. Dynamics markings include *f* and *sfz*.

Musical staff with dynamics and a triplet. The staff contains a melodic line with various note values and rests, including a half note with a fermata. Dynamics markings include *fz*. A triplet of eighth notes is marked with a '3' and a bracket.

Musical staff with notes and rests. The staff contains a melodic line with various note values and rests, including a half note with a fermata.

Musical staff with notes and rests. The staff contains a melodic line with various note values and rests, including a half note with a fermata.