

SIBONEY

Harold Pollard
Camden
Tel. 4655 1340

2nd B^b Tenor Sax
or Clarinet

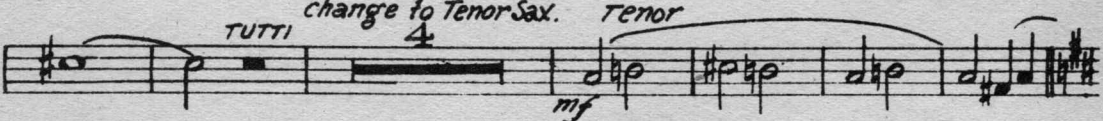
RHUMBA

Arr. by JACK MASON

By ERNESTO LECUONA

Tempo di Rumba

B^b CLARINET



THIS IS AN ALBERTI PUBLICATION

The first system consists of two staves. The upper staff contains a melodic line with eighth and sixteenth notes, often beamed together. The lower staff provides a harmonic accompaniment with similar rhythmic patterns. The key signature is one sharp (F#).

The second system continues the musical piece. The upper staff features a triplet of eighth notes. The lower staff continues with a steady accompaniment. The key signature remains one sharp.

The third system is divided into two parts by a double bar line. The first part is marked *SOLI* and contains a melodic phrase. The second part is marked *TUTTI* and features a more rhythmic, accompanimental texture. The key signature is one sharp.

The fourth system shows a change in key signature to two sharps (F# and C#). The upper staff has a melodic line with eighth notes, while the lower staff has a more active accompaniment with eighth notes.

The fifth system is marked *SOLI* and *mf* (mezzo-forte). It features a melodic line with a triplet of eighth notes in the upper staff and a supporting accompaniment in the lower staff. The key signature is two sharps.

The sixth system is marked *TUTTI* and shows a change in key signature to two flats (Bb and Eb). The upper staff has a melodic line with eighth notes, and the lower staff has a more rhythmic accompaniment.

The seventh system is marked *f* (forte). It features a melodic line with eighth notes in the upper staff and a supporting accompaniment in the lower staff. The key signature is two flats.

The eighth system continues the melodic and accompanimental lines. The upper staff has a melodic line with eighth notes, and the lower staff has a supporting accompaniment. The key signature is two flats.

The ninth system continues the musical piece. The upper staff has a melodic line with eighth notes, and the lower staff has a supporting accompaniment. The key signature is two flats.

The tenth system is the final system on the page. It features a melodic line with eighth notes in the upper staff and a supporting accompaniment in the lower staff. The key signature is two flats.