

# BROADWAY IN THE 90's

Beauty And The Beast • Seasons Of Love • This Is The Moment •  
Godspeed Titanic (Sail On) • Circle Of Life

Arranged by JOHN HIGGINS

ALTO CLARINET

Introduction - "Beauty And The Beast"

**Maestoso**

8 "Seasons Of Love"  
**Medium Pop Ballad**

16

24

32

40

## BEAUTY AND THE BEAST

(From Walt Disney's BEAUTY AND THE BEAST: THE BROADWAY MUSICAL)

Lyrics by HOWARD ASHMAN Music by ALAN MENKEN

© 1991 Walt Disney Music Company and Wonderland Music Company, Inc.

This arrangement © 2000 Walt Disney Music Company and Wonderland Music Company, Inc.  
All Rights Reserved Used by Permission

## SEASONS OF LOVE

(From RENT)

Words and Music by JONATHAN LARSON

© 1996 FINSTER & LUCY MUSIC LTD. CO.

This arrangement © 2000 FINSTER & LUCY MUSIC LTD. CO.

All Rights Controlled and Administered by EMI APRIL MUSIC INC.

All Rights Reserved International Copyright Secured Used by Permission

## THIS IS THE MOMENT

(From JEKYLL & HYDE)

Words by LESLIE BRICUSSE Music by FRANK WILDHORN

Copyright © 1990, 1995 Stage and Screen Music, Ltd. (BMI),

Cherry Lane Music Publishing Company, Inc. (ASCAP), DreamWorks Songs (ASCAP), Les Etoiles De La Musique (ASCAP) and Scaramanga Music, Inc. (ASCAP)

This arrangement © 2000 Stage and Screen Music, Ltd. (BMI), Cherry Lane Music Publishing Company, Inc. (ASCAP), DreamWorks Songs (ASCAP),

Les Etoiles De La Musique (ASCAP) and Scaramanga Music, Inc. (ASCAP)

Worldwide Rights for Stage and Screen Music, Ltd. Administered by Cherry River Music Co.

Worldwide Rights for DreamWorks Songs, Les Etoiles De La Musique and Scaramanga Music, Inc. Administered by Cherry Lane Music Publishing Company, Inc.

International Copyright Secured All Rights Reserved

## GODSPEED TITANIC (SAIL ON)

(From TITANIC)

Music and Lyrics by MAURY YESTON

Copyright © 1995 Yeston Music Ltd. (BMI)

This arrangement Copyright © 2000 Yeston Music, Ltd. (BMI)

Worldwide Rights for Yeston Music Ltd. Administered by Cherry River Music Co.

International Copyright Secured All Rights Reserved

## CIRCLE OF LIFE

(Disney Presents THE LION KING: THE BROADWAY MUSICAL)

Music by ELTON JOHN Lyrics by TIM RICE

© 1994 Wonderland Music Company, Inc.

This arrangement © 2000 by Wonderland Music Company, Inc.

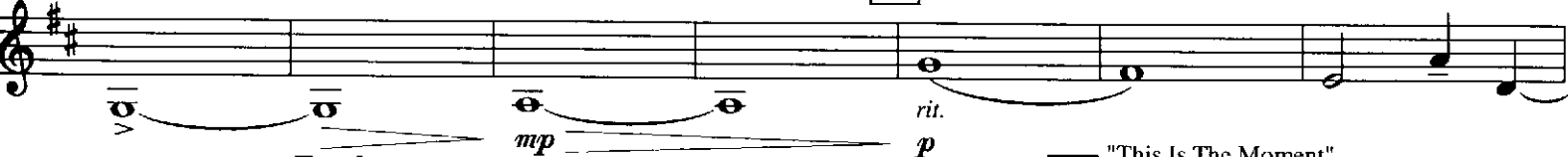
All Rights Reserved Used by Permission

E $\flat$  ALTO CLARINET

48



64



Freely  
(♩ = ♩)

72 "This Is The Moment"  
Slowly 7



81



90



99 Allegretto



104 "Beauty And The Beast"  
Andante



112



**E<sup>b</sup> ALTO CLARINET**

**122 "Godspeed Titanic (Sail On)"  
Majestic**

pp *f* **132** **140** *rit.* *ff a tempo* **148** *ff dim.* *mp rit.*

This section of the score for E♭ Alto Clarinet covers measures 122 to 148. It begins with a piano (*pp*) dynamic and a crescendo leading to a forte (*f*) dynamic. Measure 132 is marked with a box. Measure 140 includes a ritardando (*rit.*) and a fortissimo (*ff*) dynamic with the instruction *a tempo*. Measure 148 is also boxed and features a fortissimo (*ff*) dynamic with a decrescendo (*dim.*) and a mezzo-piano (*mp*) dynamic with a ritardando (*rit.*).

**155 "Circle Of Life"  
Moderate African Beat**

**155** *mp* **165** *cresc.* *f* **173** *ff* **181** *dim.* *p* *fff* *pp* *fff* *ff rall.*

This section of the score for E♂ Alto Clarinet covers measures 155 to 181. Measure 155 is boxed and marked with a mezzo-piano (*mp*) dynamic. Measure 165 is boxed and includes a crescendo (*cresc.*) and a forte (*f*) dynamic. Measure 173 is boxed and marked with a fortissimo (*ff*) dynamic. Measure 181 is boxed and includes a decrescendo (*dim.*), a piano (*p*) dynamic, and a fortissimo (*fff*) dynamic. The section concludes with a fortissimo (*ff*) dynamic and a rallentando (*rall.*) instruction.